

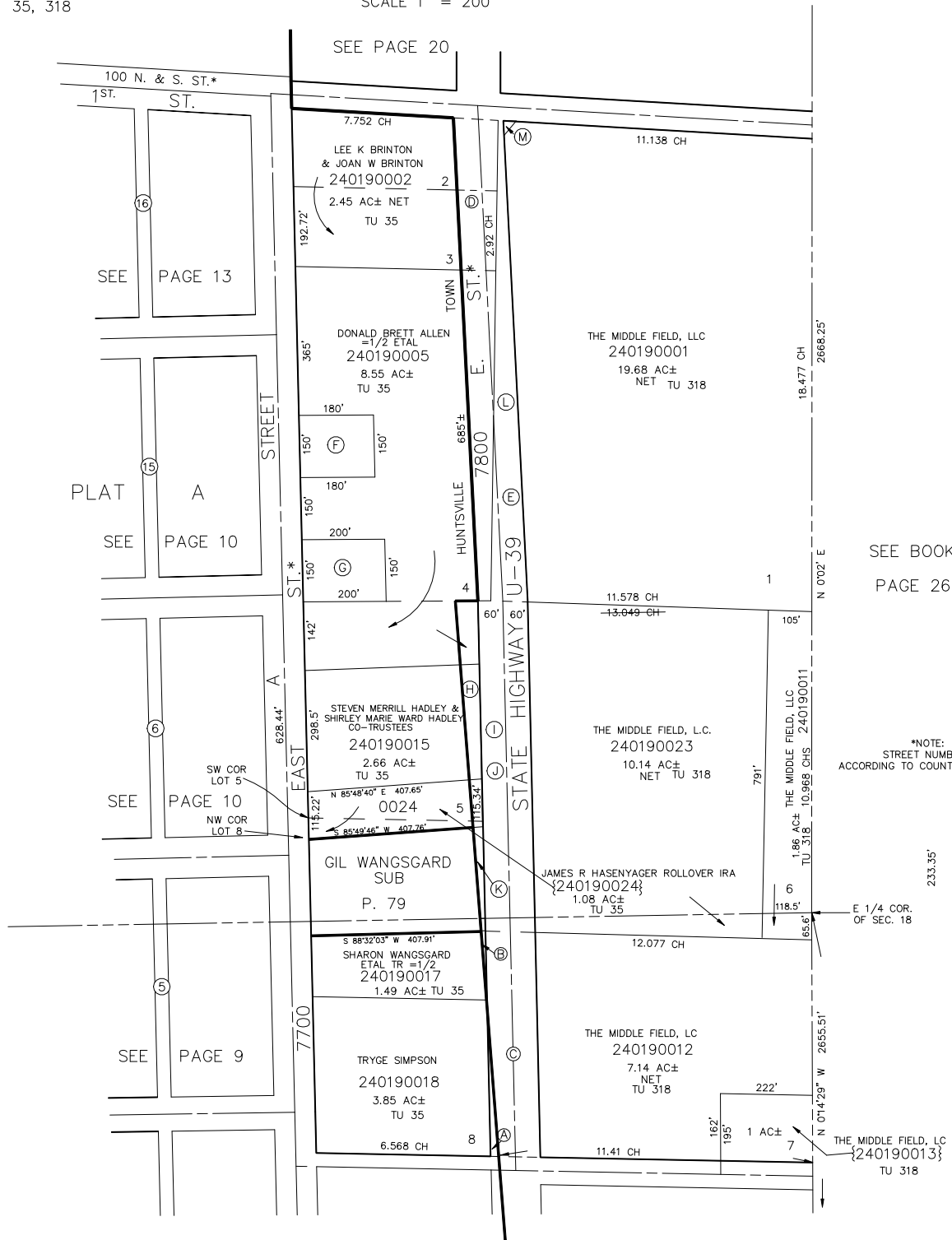
HUNTSVILLE SURVEY

BLOCK 2 PLAT B

SCALE 1" = 200'

TAXING UNIT: 35, 318

- (A) STATE ROAD COMMISSION OF UTAH 240190019 TU 35
- (B) SHARON WANGSGARD TR ETAL 240190027 727 SQ FT TU 35
- (C) STATE OF UTAH ROAD COMMISSION 240190021 TU 318
- (D) STATE ROAD COMMISSION OF UTAH 240190003 TU 318
- (E) STATE OF UTAH ROAD COMMISSION 240190020 TU 318
- (F) DONALD BRETT ALLEN =1/2 ETAL 240190026 27,000 SQ FT TU 35
- (G) DONALD BRETT ALLEN & WF LAURIE C 240190025 39,000 SQ FT TU 35
- (H) STEVEN M HADLEY & WF SHIRLEY W 240190007 10,505 SQ FT TU 318
- (I) STATE OF UTAH 240190008 TU 318
- (J) STATE OF UTAH 240190010 TU 318
- (K) GILBERT A WANGSGARD & WF TRUDI 240190009 4005 SQ FT TU 318
- (L) STATE ROAD COMMISSION OF UTAH 240190006 1.28 AC± TU 318
- (M) UTAH DEPARTMENT OF TRANSPORTATION 240190029 533 SQ FT TU 318



SEE BOOK 21 PAGE 26-2

*NOTE: STREET NUMBERS ACCORDING TO COUNTY SURVEYOR

233.35'

E 1/4 COR. OF SEC. 18